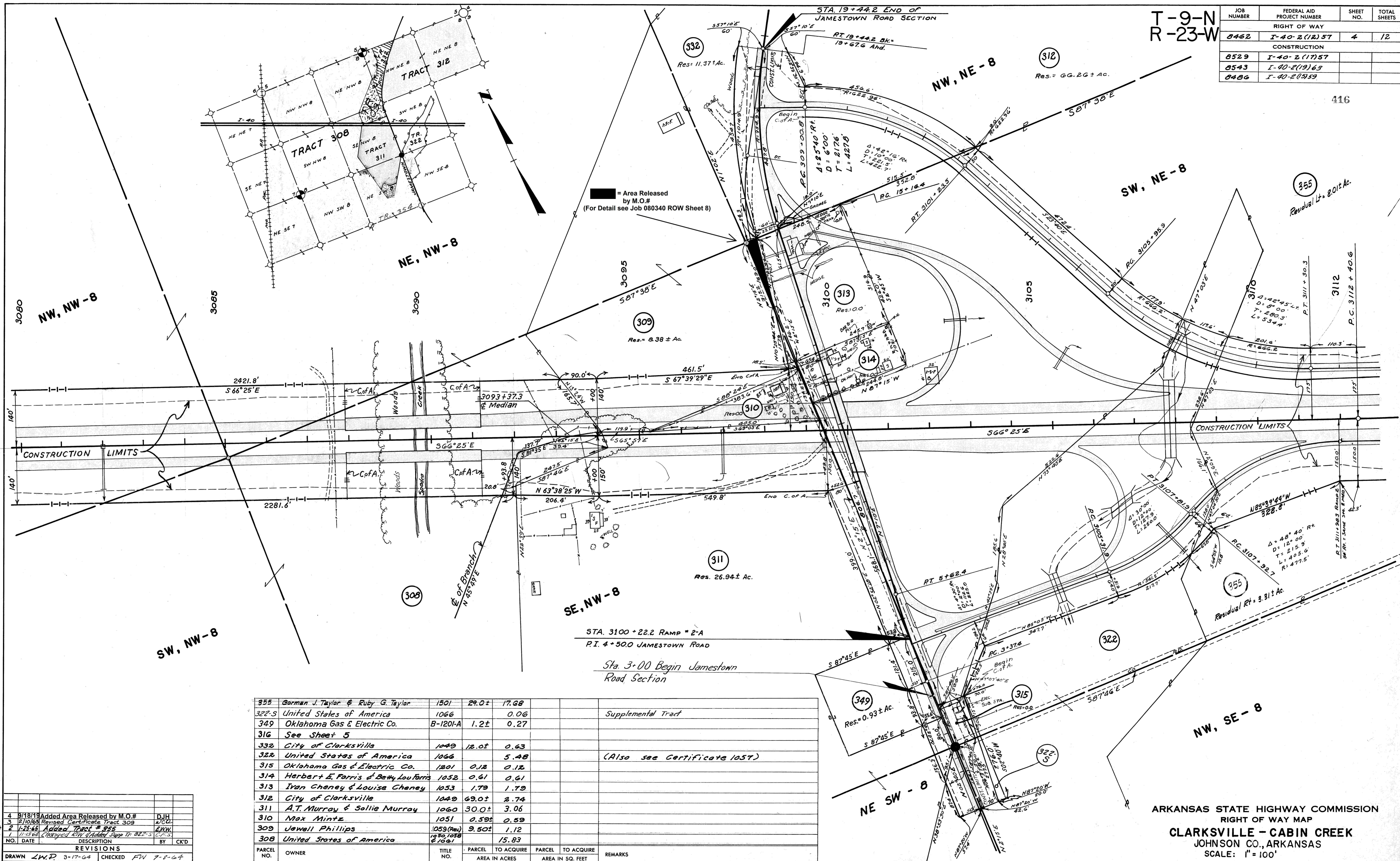


T-9-N
R-23-W

JOB NUMBER	FEDERAL AID PROJECT NUMBER	SHEET NO.	TOTAL SHEETS
0462	I-40-2(12)57	4	12
RIGHT OF WAY			
CONSTRUCTION			
0529	I-40-2(17)57		
0543	I-40-2(19)63		
0486	I-40-2(15)59		

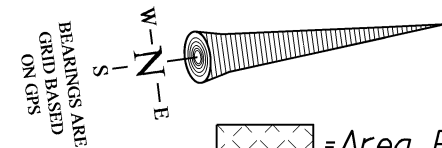



355	Gorman J. Taylor & Ruby G. Taylor	1501	29.0±	17.68			
322-3	United States of America	1066		0.06			Supplemental Tract
349	Oklahoma Gas & Electric Co.	B-1201-A	1.2±	0.27			
316	See Sheet 5						
332	City of Clarksville	1049	12.0±	0.63			
322	United States of America	1066		5.48			(Also see Certificate 1057)
315	Oklahoma Gas & Electric Co.	1201	0.12	0.12			
314	Herbert E. Farris & Betty Lou Farris	1052	0.61	0.61			
313	Ivan Cheney & Louise Cheney	1053	1.79	1.79			
312	City of Clarksville	1049	69.0±	2.74			
311	A.T. Murray & Sallie Murray	1060	30.0±	3.06			
310	Max Mintz	1051	0.59±	0.59			
309	Jewell Phillips	1059 (Rev)	9.50±	1.12			
308	United States of America	1050, 1058 & 1061		15.83			
PARCEL NO.	OWNER	TITLE NO.	PARCEL AREA IN ACRES	TO ACQUIRE AREA IN ACRES	PARCEL TO ACQUIRE AREA IN SQ. FEET	REMARKS	

NO.	DATE	DESCRIPTION	BY	CK'D
4	9/18/79	Added Area Released by M.O.#	D.J.H.	
3	2/10/65	Revised Certificate Tract 309	R/C/D	
2	1-25-65	Added Tract # 355	E.K.W.	
1	11-13-64	Checked ROW & Added Supp Tr. 322-3	C.F.S.	

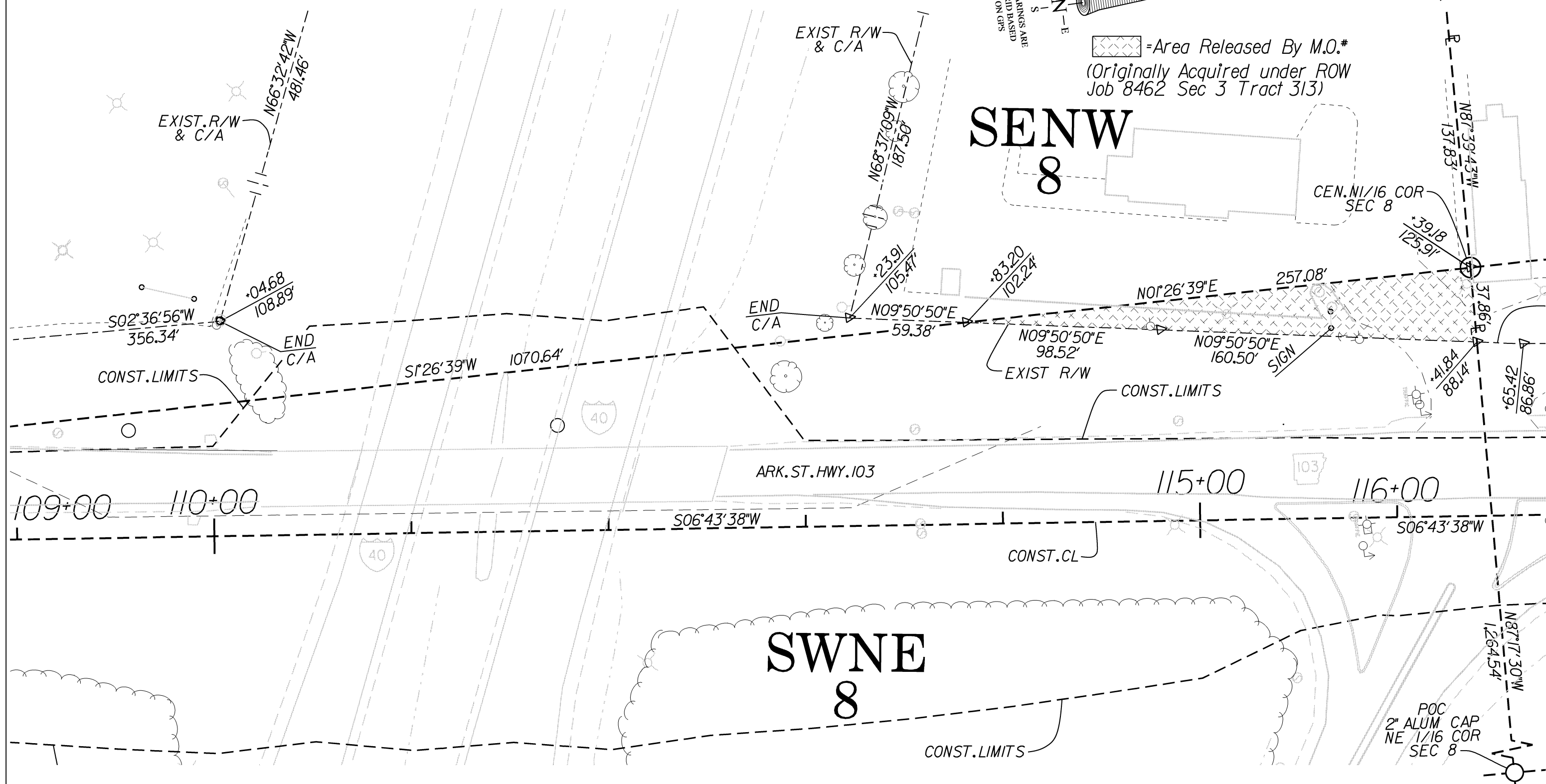
ARKANSAS STATE HIGHWAY COMMISSION
RIGHT OF WAY MAP
CLARKSVILLE - CABIN CREEK
JOHNSON CO., ARKANSAS
SCALE: 1" = 100'

EXHIBIT "B" Sheet 1 of 2



 = Area Released By M.O.*
 (Originally Acquired under ROW
 Job 8462 Sec 3 Tract 313)

SE
NW
8



MARKET ST. - I-40 WB RAMPS
 (CLARKSVILLE)(S)
 ARKANSAS STATE HIGHWAY COMMISSION
 RIGHT OF WAY MAP
 JOB 080340 JOHNSON COUNTY
 SCALE: 1" = 50'

EXHIBIT "B" Sheet 2 of 2

3	9-18-19	Added Area Released by M.O.*	DH	DH
2	9-27-17	Rev. Exist. R/W from Sta. 113+83.20 to Sta. 116+41.81 Left per Survey Division	RA	DH
1	4-23-13	Rev. const. limits	RM	FR
NO.	DATE	DESCRIPTION	BY	CK'D
DATE:	05/2012	REVISIONS		
DESIGNED:	R. McManus	REVIEWED:	F. Rippond	